

GO PRO

Eicher Pro 3014

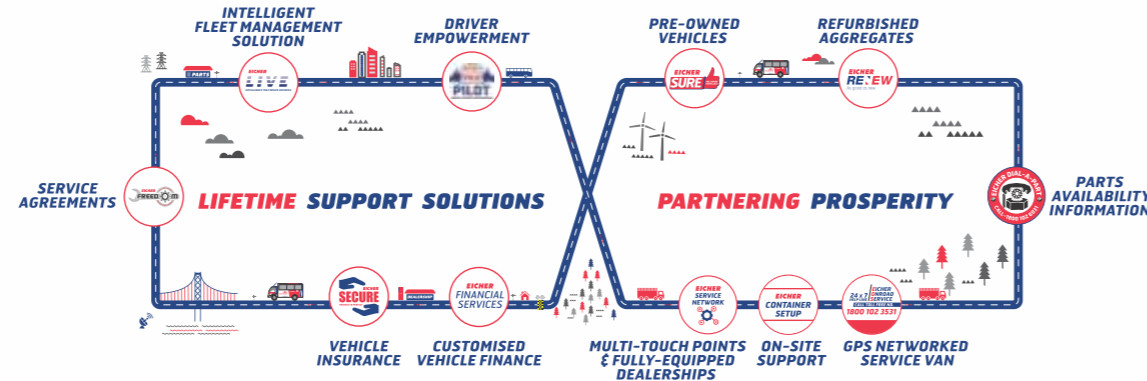
The 13.85 Ton GVW Truck

SPECIFICATIONS Eicher Pro 3014

Wb Name	G	H	J	M	M
Gvw (Kgs)			13850		
Wheelbase (mm)	3800	4300	4550	5550	5550
Cargo Body Length (Internal)	17.2ft (5256mm)	19ft (5805mm)	20ft (6105mm)	22ft (6780mm)	24ft (7359mm)
Cabin & Chassis (CBS)	Yes	Yes	Yes	Yes	Yes
Fixed Side Deck (FSD)	Yes	NO	NO	NO	NO
Drop Side Deck (DSD)	Yes	NO	NO	NO	NO
High Side Deck Day (HSD DAY)	Yes	NO	NO	NO	NO
High Side Deck Sleeper (HSD SLP)	No	Yes	Yes	Yes	Yes
Cargo Body Width (HSD)	7.0ft (2127mm)	7.0ft (2127mm)	7.0ft (2127mm)	7.6ft (2343mm)	7.6ft (2343mm)
Cargo Body Height (HSD)	6.25ft (1918)	6.3ft (1931)	6.3ft (1931)	6.2ft (1901)	6.2ft (1901)
Engine	E494, Cylinder 4 Valves CRS engine with Volvo Group EMS 3.0				
Max Power Output	101 kw (~135 HP) @2600 rpm				
Max Power Output	450 Nm @ 1200-1800 rpm				
Emission	BS IV				
Transmission	Eicher 4M65N				
Gear Type	6 Speed Over Drive (6 forward, 1 reverse) with 6th gear OD				
Clutch Diameter (mm)	330 mm				
Gradeability	22%				
Steering	Tilt and telescopic power steering				
Ground Clearance (mm)	220 mm				
Battery	12 V - 100 AH				
Fuel Tank Capacity	190/ 395L				
Service Brakes	Dual circuit, full air S cam with APDA unit				
Exhaust Brakes	Pneumatically Actuated				
Suspension (Front)	Parabolic with double acting telescopic shock absorber with anti roll bar				
Suspension (Rear)	Semi-elliptical laminated leaves with helper leaf spring				
Tyres	8.25R20-16PR (Standard radial tyres)				
Cabin	2.1m wider new generation sleeper cab with a host of features for driver comfort including 6 way adjustable seat & for the first time, cruise control. Day cab also available.				
Warranty (std.)	2 years unlimited kms on vehicle 4 years unlimited kms on engine & gearbox				
Warranty (opt.)	1 year unlimited kms on engine and gearbox (Extended warranty for 5th year)				



EICHER SERVICE AVAILABLE ANYWHERE, ANYTIME



Eicher Live, Pro Pilot, Eicher Sure and Eicher Container setup is not available for Eicher bus range

*CAUTION - "Do not weld or drill on chassis frame." Accessories and features shown in picture or elsewhere may not constitute standard fitment. "Weight mentioned is for standard configuration with standard body sizes and will change due to optional fitments "As a result of continuous research and innovations carried out, specifications are merely indicative and are subject to change without notice"

VE COMMERCIAL VEHICLES
A VOLVO GROUP AND EICHER MOTORS JOINT VENTURE

VE COMMERCIAL VEHICLES LTD.
Registered Address - 3rd Floor Select Citywalk,
A-3 District Centre, Saket, New Delhi 110 017, India
CIN - U74900DL2008PLC175032
Email - info@vecv.in
Website - http://www.vecv.in

AUTHORIZED DEALER

Eicher Pro 3014

The 14 ton GVW truck

TRUCKS AND BUSES

AAGE BADHO, LEADER RAHO.!

High performance engine matlab business growth.



BSIV
Mileage ka Badshah

High Rated Payload

Fuel Coaching

Next Gen Sleeper Cabin

EICHER GO PRO

Eicher Pro 3014

Redefining levels of performance and profitability, leading to high Vehicle Lifetime Profitability (VLP)

Eicher Pro 3014 is all set to revolutionize the commercial vehicle space in 13T GVW segment in India. It will cater the needs of all those customers who are looking for high rated payload in the segment for interstate transportation of goods. With a new generation highly fuel-efficient engine and world-class cabin, it offers state-of-the-art features, high level of comfort and safety along with superior overall performance. Eicher Pro 3014 is going to set new benchmarks in performance and profitability.



Best-in-class fuel efficiency



9.2T rated payload in G HSD



Modern world-class sleeper cabin comfort



Fast pick-up and acceleration



Superior uptime



Optimized maintenance cost



EICHER E494 - HIGH PERFORMANCE ENGINE



Next generation CRS 4 cylinder 4 valve engine with Volvo Group EMS 3.0

Max power output - 101 Kw (~135 HP) @ 2600 rpm

Max torque output - 450 Nm @ 1200-1800 rpm

Segment leading fuel efficiency and superior performance

New 4 cylinder engine with high combustion efficiency and low parasitic losses, leading to higher fuel efficiency

Advanced fuel injection technology

NEXT GENERATION SLEEPER CABIN



Modern world-class spacious cabin with state-of-the-art features

Designed to provide best-in-class comfort and a superior ride

Digital instrument panel with advanced features like cruise control and fuel coaching for driver assist

CED painted cabin with high gloss life.

Day cabin also available*

Other Features

Dual panel cabin/ 3 point ELR seat belt/ Battery carrier with air tank mounting for easy serviceability/ Rest kit & sleeper cab availability as option/ Wide angle ORVM/ Butterfly quarter glass for better ventilation/ Bumper integrated headlamp/ Lower footstep height

Superior aesthetics



Aerodynamic cabin with modern styling



Dual panel cabin with cockpit-like styling



Instrument panel with trip mileage meter and diagnostics

Enhanced convenience



Lockable glove box



Heavy tray on both sides inside the cabin



Stylish room lamp



Clutch pedal foot and heel pad

Supreme comfort



Hybrid GSL



Tilt and telescopic steering



Wide door opening (up to 80 degree)



6-way adjustable driver seat

Rugged aggregates



6-speed OD gearbox



Domex chassis with high tensile strength



Air processing distribution assembly for long life effective braking



Monotron propeller shaft, 'lubricated for life'

NEXT GEN FEATURES



IDIS – Intelligent Driver Information System giving information on operational data, fuel consumption and on board diagnostics



Cruise control comfortable for longer drive (first time in Indian commercial vehicle industry)

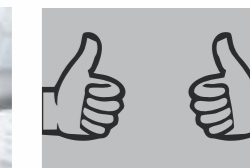


Fuel coaching and on-board diagnostic with real time guidance to drivers

When to accelerate



When to change gear



Driving ok!!

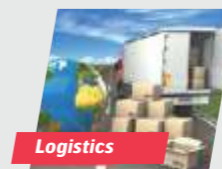
GO PRO

The Eicher Pro Series is a range of next-generation trucks and buses from 4.9 to 49 tons, designed to take the industry to a new PROfessional level. It brings together the Volvo Group's world-class technology and processes and the frugal engineering and local expertise of Eicher. In keeping with the 'Go PRO' philosophy, the Eicher PRO Series PROMises to deliver higher PROfitability and more PROsperity to its customers through best-in-class fuel efficiency, superior uptime and better overall vehicle performance.

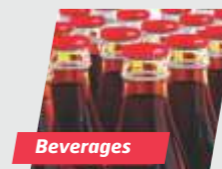
Applications:
Eicher Pro 3014 is suited for varied applications



Parcel/ Courier



Logistics



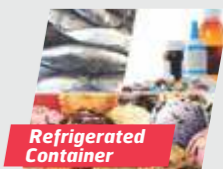
Beverages



Vegetables



White Goods



Refrigerated Container